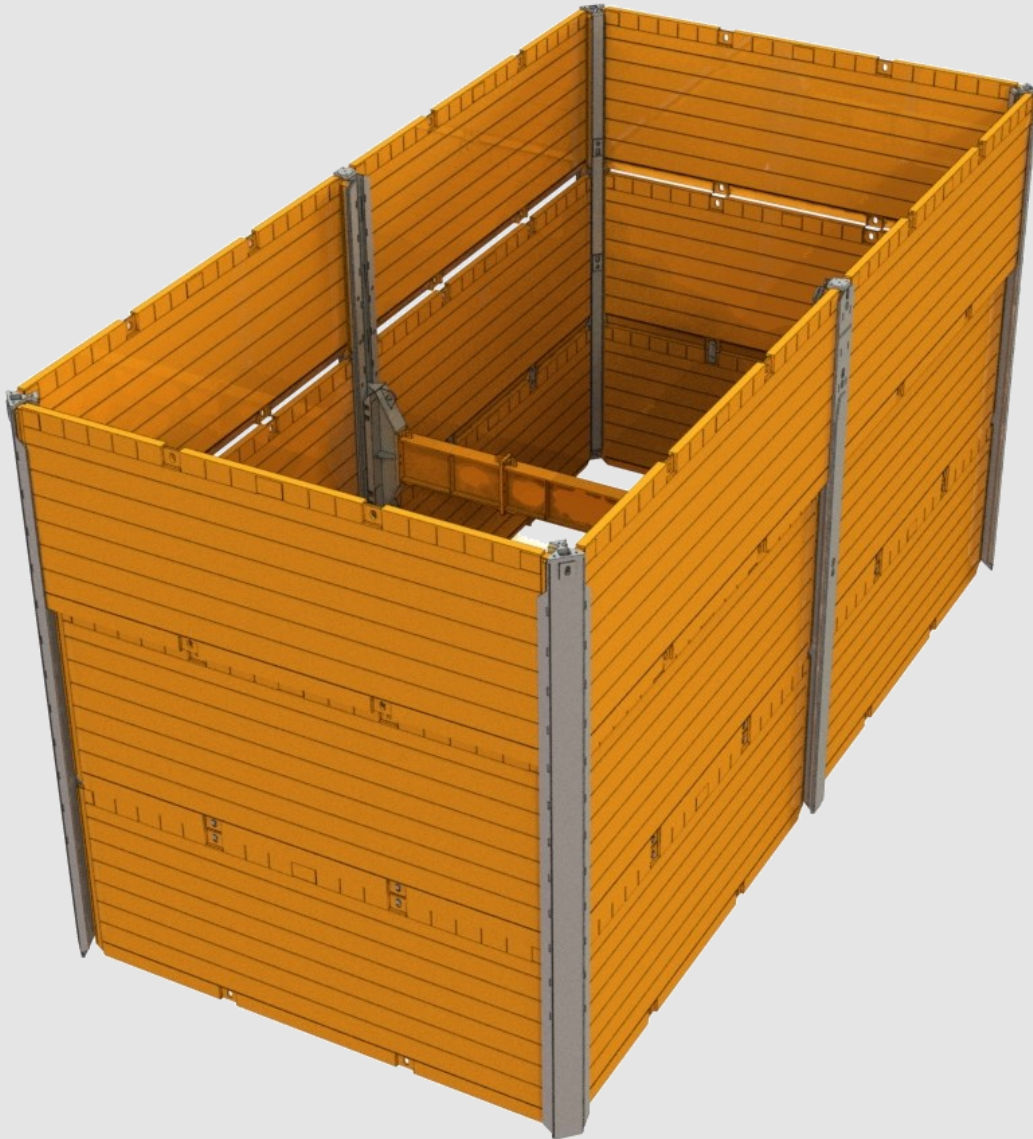


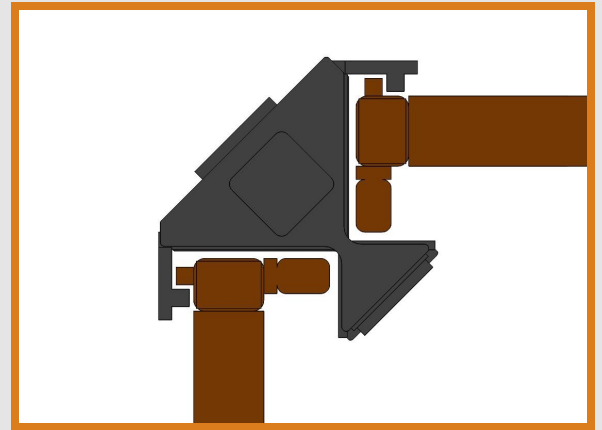
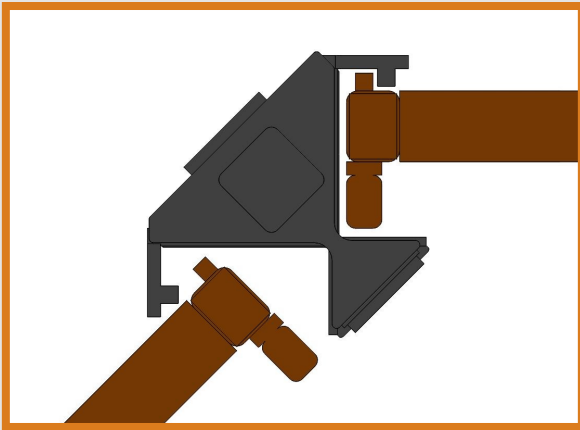
Pacific SHORING

Quality Driven, Lead Time Focused



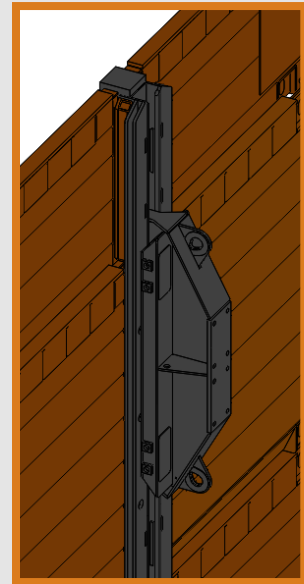
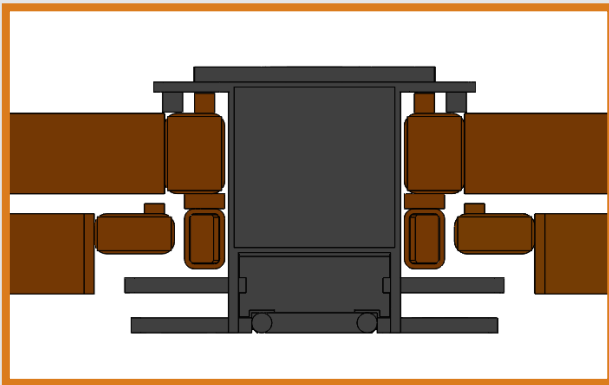
SLIDE RAIL SYSTEM

CORNER POST



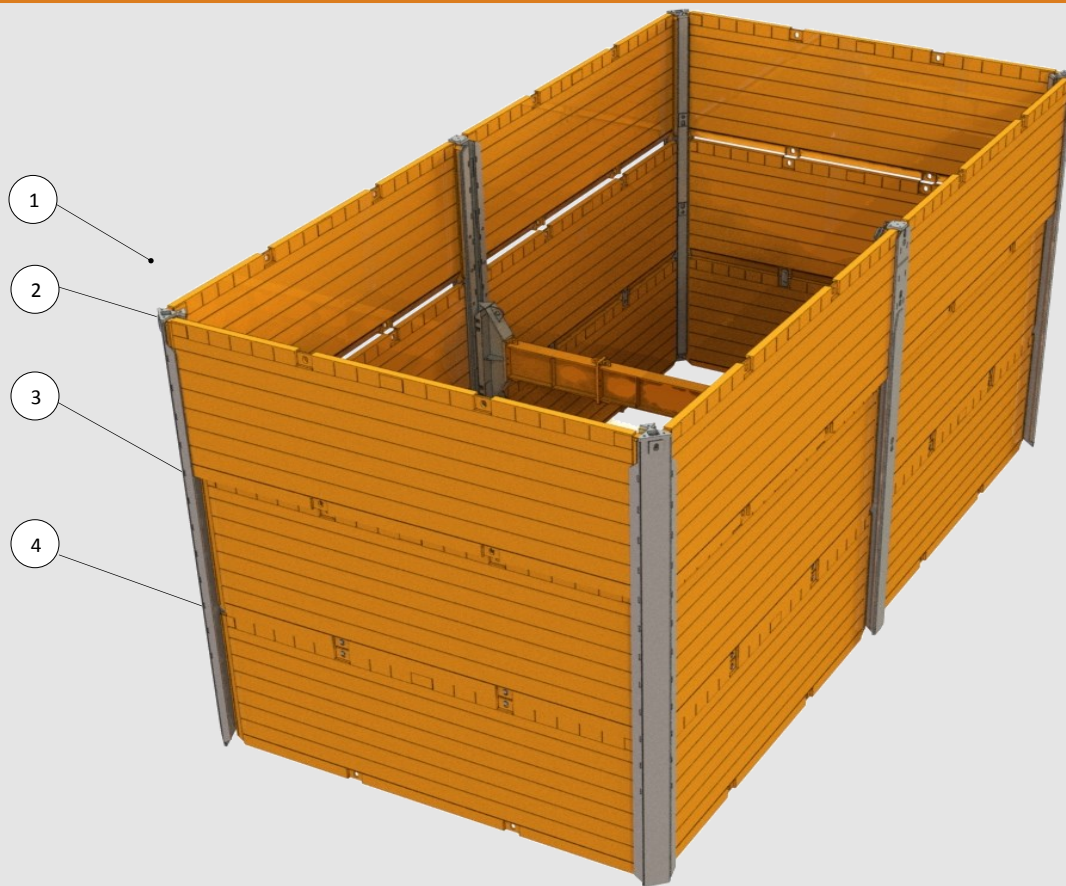
The corner post is open slotted to allow for the outer panels to be either vertically dropped in place or swung in at ground level. Corner posts come in a variety of sizes.

LINEAR POST & STRUT CART



The linear post allows for the multiple bays to be lined up. The rolling strut cart pairs with the linear post and allows for extensions to span the gap at a desired height. Linear posts come in a variety of sizes.

SLIDE RAIL SYSTEM



1. Corner Post
2. Outer Panel
3. Inner Panel
4. H Joint

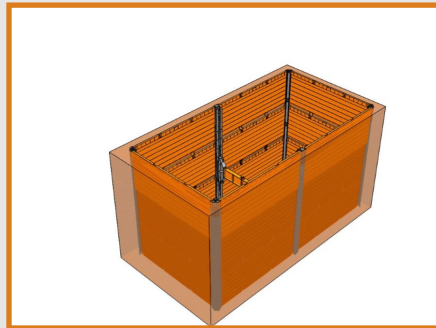
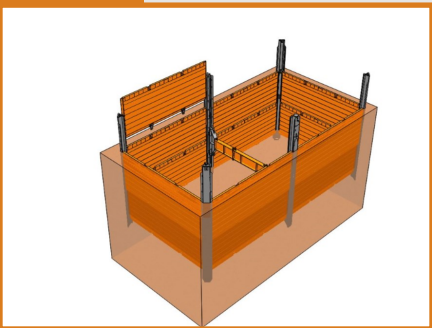
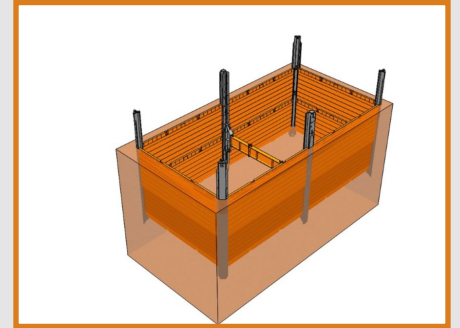
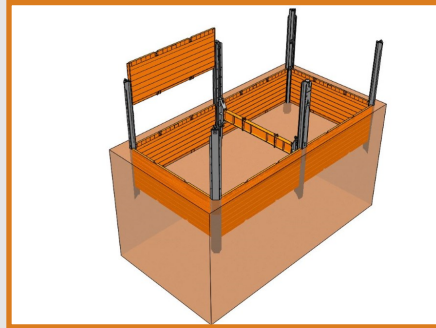
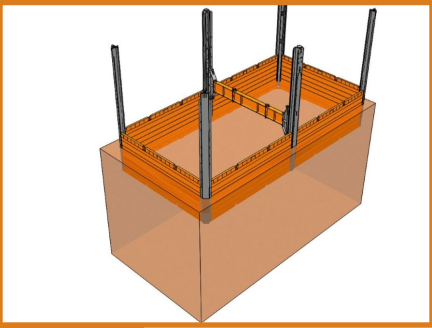
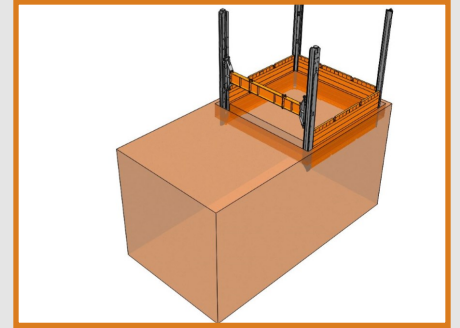
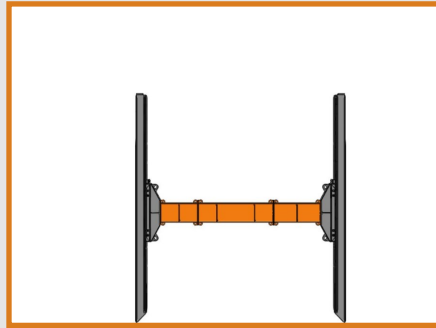
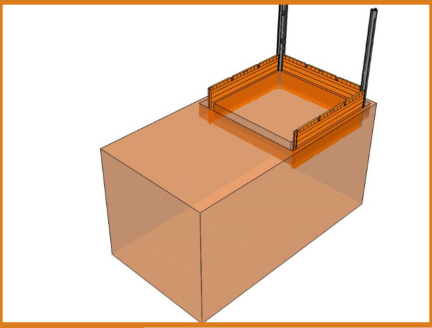
Pacific's Slide Rail Systems are certified by a registered Professional Engineer and are designed to meet OSHA safety requirements.

The system allows for either a simple pit application with four corner posts or for a more complex configuration with multiple linear posts and strut carts.

The stackable inner panels allow for variable depth without added complexity.

Pacific SHORING

Quality Driven, Lead Time Focused



www.pacificshoring.com

5385 Bay Oaks Dr. Pasadena, TX 77505

Tel: 281-998-0442